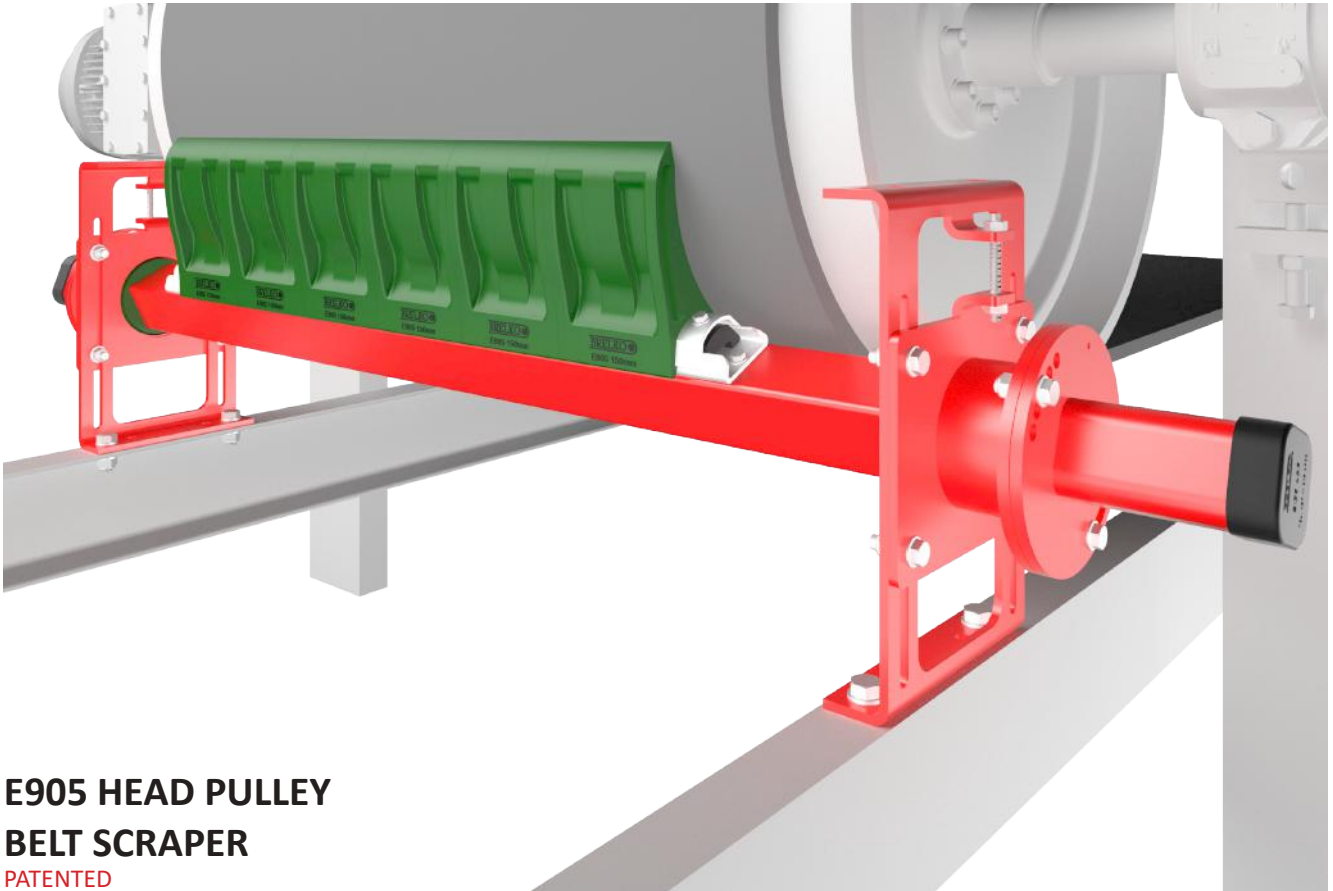


INSTALLATION, OPERATING & MAINTENANCE MANUAL



**E905 HEAD PULLEY
BELT SCRAPER**
PATENTED

Project Name	:	.
Project Number	:	.
Order Number	:	.
	:	.
Model Number	:	.
Purchase Date	:	.
Purchased From	:	.
Installation Date	:	.
	:	.

Model number information can be found on the Label found on the scraper carton.
This information will be helpful for any future inquiries or questions about belt scraper replacement parts, specifications or troubleshooting.

Table of Contents

1.	Disclaimer _____	168
2.	Safety Note _____	168
3.	The following symbols may be used in this manual: _____	168
4.	General Information _____	168
4.1.	Application and Features _____	169
4.2.	Reference Drawing - E905-001 _____	170
5.	Handling _____	171
5.1.	Receiving the goods _____	171
5.2.	Work Safety _____	171
5.3.	Handling _____	172
5.4.	Storage _____	172
5.5.	Preparations for installing Belt Scrapers _____	172
5.6.	Recommended Tools List _____	172
6.	Maintenance _____	173
6.1.	New Installation _____	173
6.2.	Routine Visual Inspection (every 2~4 weeks) _____	173
6.3.	Routine Physical Inspection (every 6~8 weeks) _____	173
6.4.	Parts List and Assembly Instructions _____	174
6.5.	Reference Drawing - E905-002 _____	175
6.6.	Installation Instructions _____	176
6.7.	Reference Drawing - E905-003 _____	177
7.	Procedure for Replacing/Repairing Scrapers _____	178
8.	Maintenance Log _____	179
9.	Conveyor Belt & Equipment Check List _____	180
10.	Shipping Specifications _____	183
11.	Trouble Shooting _____	185

1. Disclaimer

Brelko conveyor products (pty) ltd hereby disclaims any liability for: damage due to contamination of the material; user's failure to inspect, maintain and take reasonable care of the equipment; injuries or damage resulting from use or application of this product contrary to instructions and specifications contained herein. Brelko's liability shall be limited to repair or replacement of equipment shown to be defective.

2. Safety Note

Observe all safety rules given herein along with owner and Government standards and regulations. Know and understand lockout/tag-out procedures as defined by National Standards Institutes, National Standard for Personnel Protection - Lockout/Tag-out of Energy Sources - Minimum Safety Requirements and Occupational Health and Safety.

3. The following symbols may be used in this manual:



Danger: Immediate hazards that will result in severe personal injury or death.



Warning: Hazards or unsafe practices that could result in personal injury.



Caution: Hazards or unsafe practices that could result in product or property damages.

Important:

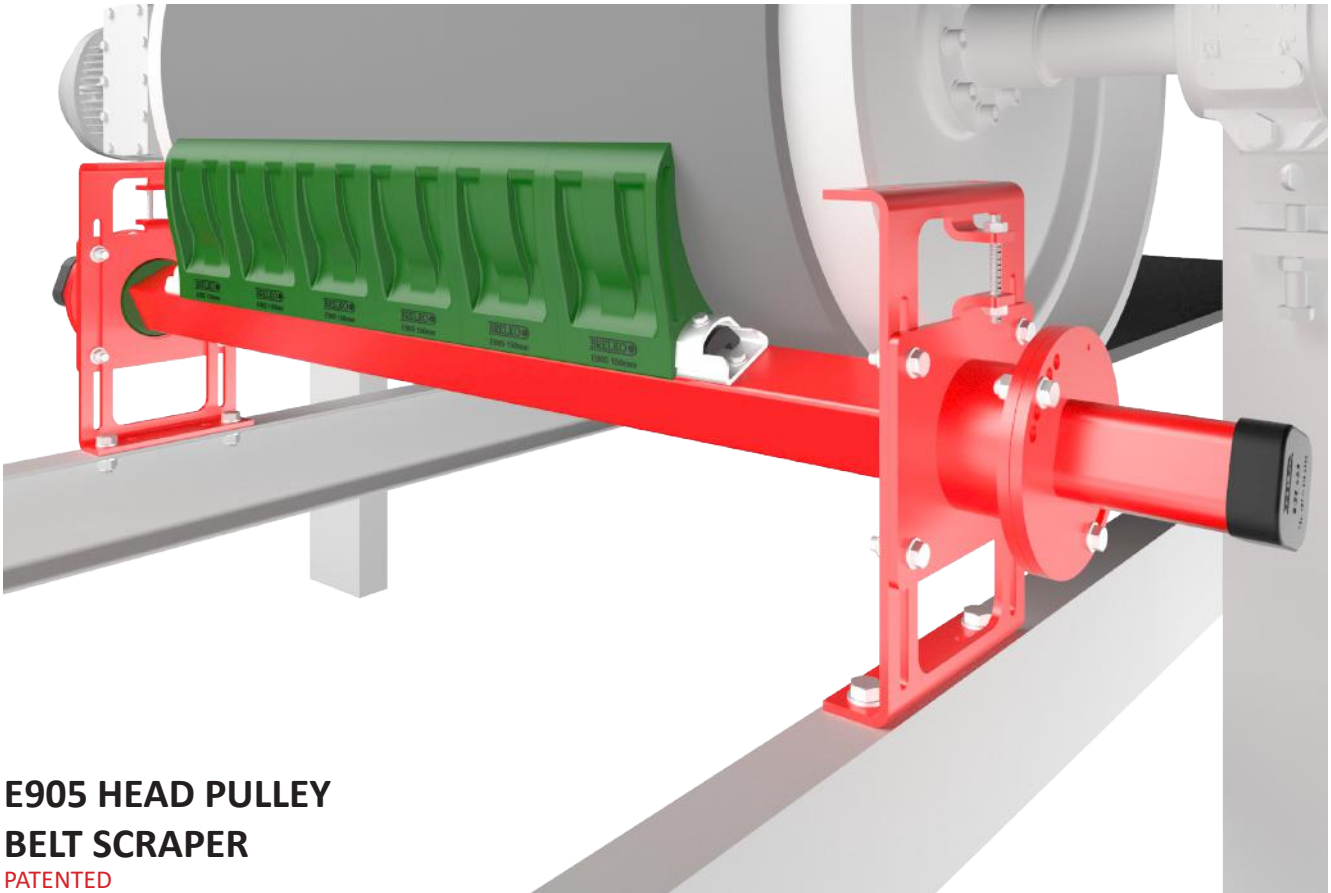
Important: Instructions that must be followed to ensure proper installation/operation of equipment.

Note:

Note: General statements to assist the reader.

4. General Information

Brelko belt scrapers are designed to operate with minimum maintenance. However, to maintain superior performance some service is required. When the scraper is installed a regular maintenance program should be set up. This program will ensure that the scraper operates at optimal efficiency and problems can be identified and fixed before the scraper stops working. All safety procedures for inspection of equipment (stationary or operating) must be observed. Secondary Scrapers operate at the discharge end of the conveyor and is in direct contact with the moving belt. Only visual observations can be made while the belt is running. Service tasks can be done only when the conveyor is stopped and by observing the correct lockout/tag-out procedures.



E905 HEAD PULLEY BELT SCRAPER

PATENTED

APPLICATIONS

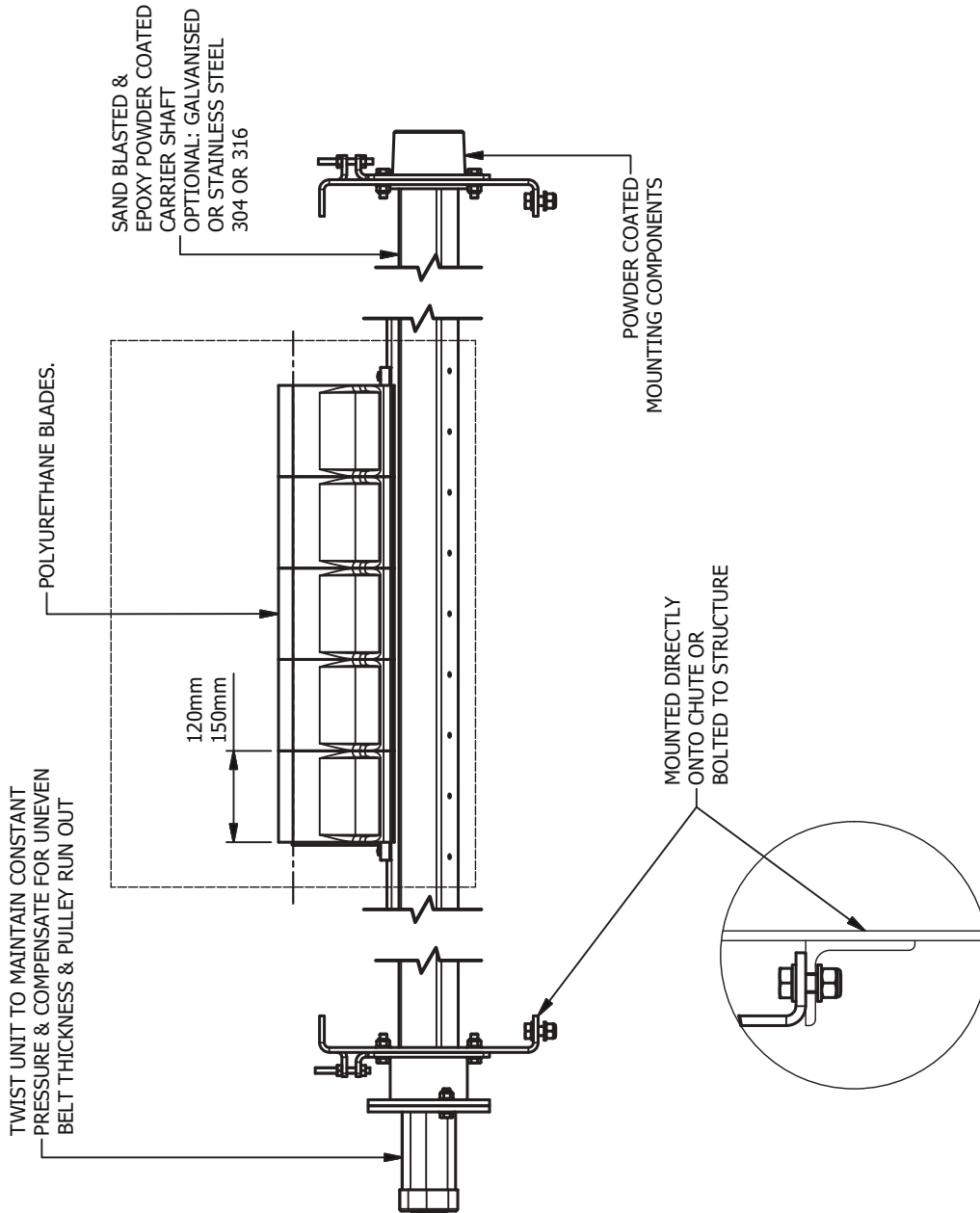
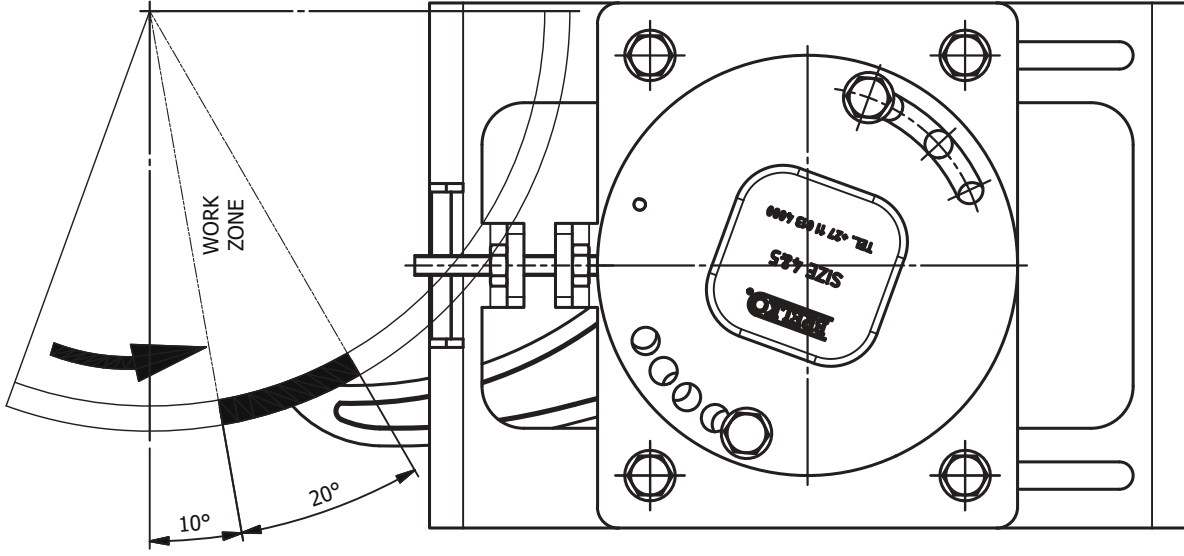
- As a Head Pulley Scraper, working directly on the head pulley.
- As a Head Pulley Scraper, when wet and sticky materials are conveyed.
- Can be installed where there is not enough space for other scrapers.
- Suitable for all types of conveyor belts and metal fastener systems.

FEATURES

- Adjustable Brelko torsion twist tensioners allow the scraper to maintain a constant pressure on the belt, are self adjusting and allow the scraper to deflect away from any obstruction, as a significant safety feature.
- Specially formulated polymeric blades give maximum life, and keep the possibility of damage to belt repairs, splices and metal fasteners to a minimum.
- Patented V-base blade mounting makes blade changing quick and simple.
- Multi-blade construction allows individual blades to deflect for minor obstructions and adapt to belt profile.
- Streamlined scraper construction prevents material build-up on the scraper.

E905-TT TWIST TENSIONER MOUNT SINGLE ROW MULTI-BLADE HEAD PULLEY SCRAPER

© 08-2016



STANDARD CONTRUCTION & FINISHES FOR BELT WIDTHS FROM 600mm TO 2100mm

REV. A
No. E905-001
DRW. E905-001

NOTE: FEATURES & OPTIONS SHOWN:
PLEASE REFER TO DETAILED MANUAL FOR INSTALLATION INSTRUCTIONS, MAINTENANCE & SPARE PARTS

5. Handling

5.1. Receiving the goods

Check that the shipment contains all the items specified on the delivery note. If this does not match the delivery note or if the items show any transportation damage, **list it on the freight bill**. Describe the damage and the number of incorrect or faulty items and **contact your supplier immediately**.

Defective parts should not be used under any circumstances. Claims must be made within 8 days from the arrival of goods. Brelko do not cover claims or exchange of product if installation was not carried out according to installation instructions.

5.2. Work Safety

Always use protective gloves and clothing. Always use a lifeline and soft-sole footwear when work will be carried out on raised platforms. Before you move a scraper or plough, check that it is securely attached to the lifting equipment. Always observe local safety regulations.



Before removing/installing equipment, lock out/tag out energy source to conveyor, and/or conveyor accessories.

Turn off and lock out/tag out energy source according to local standards.



If equipment will be installed in an enclosed area, test gas level or duct content before using a cutting torch or welding. Using a cutting torch or welding in an area with gas or dust may cause an explosion.

If using a cutting torch or welding machine, test atmosphere for gas level or dust content.

5.3. Handling

When scrapers are unloaded from the transportation vehicle onto customer's platform, place them on boards spaced max 1m apart at a minimum of 5cm from the ground.

5.4. Storage

Scrapers can be stored unpacked or in transportation package. Scrapers must not be stored on top of one another, protect the scrapers by storing them in a cool dry area on a flat surface.

5.5. Preparations for installing Belt Scrapers

Before installation, check all measurements and any of the other geometric design

5.6. Recommended Tools List

BELT SCRAPERS	
QTY	DESCRIPTION
2	EXTENSION CORD (20m MINIMUM)
1	PORT-A-PACK (OXY-ACETYLENE)
1	PRICKER
1	COMBINATION GAUGE (WITH SPIRIT LEVEL)
1	STRAIGHT EDGE (1M MINIMUM)
1	90° SET SQUARE
1	5M TAPE MEASURE
2	ADJUSTABLE SPANNERS
1	PIPE WRENCH (3" MINIMUM)
1	SOCKET RATCHET SET (6mm - 30mm)
2	RINGSET SPANNERS - M13, 15, 16, 17, 18, 19, 24
1	STANLEY KNIFE
2	M46 SET SPANNERS
2	M65 SET SPANNERS
1	HARD FACE HAMMER – 4pd
1	SOFT FACE HAMMER - 1KG
3M	NYLON ROPE
2	"G" CLAMPS - 6" - 8"
1	JIMMY LEVER

6. Maintenance

Brelko belt scrapers are designed to operate with minimum maintenance. However, to maintain superior performance some service is required. When the scraper is installed a regular maintenance program should be set up. This program will ensure that the scraper operates at optimal efficiency and problems can be identified and fixed before the scraper stops working. All safety procedures for inspection of equipment (stationary or operating) must be observed. The E901 Head Pulley Scraper operates at the discharge end of the conveyor and is in direct contact with the moving belt. Only visual observations can be made while the belt is running. Service tasks can be done only with the conveyor stopped and by observing the correct lockout/tag-out procedures.

6.1. New Installation

After the new scraper has run for a few days a visual inspection should be made to ensure the scraper is performing properly. Make adjustments as needed.

6.2. Routine Visual Inspection (every 2~4 weeks)

- A visual inspection of the scraper and belt can determine:
- If the mounts are adjusted at the correct pressure for optimal cleaning
- If the belt looks clean or if there are areas that are dirty
- If the blade is worn out and needs to be replaced
- If there is damage to the blade or other scraper components
- If fugitive material is built up on the scraper or in the transfer area
- If there is cover damage to the belt
- If there is vibration or bouncing of the scraper on the belt
- If a snub pulley is used, a check should be made for material build-up on the pulley
- If any of the above conditions exist, a decision should be made on when the conveyor can be stopped for scraper maintenance.

6.3. Routine Physical Inspection (every 6~8 weeks)

When the conveyor is not in operation and properly locked and tagged out a physical inspection of the scraper to perform the following tasks:

- Clean material build-up off of the scraper blade and pole.
- Closely inspect the blade for wear and any damage. Replace if needed.
- Check blade for proper installation and condition. Replace if needed.
- Ensure full blade to belt contact.
- Inspect the scraper pole for damage.
- Inspect all fasteners for tightness and wear. Tighten or replace as needed.
- Replace any worn or damaged components.
- Check the pressure of the scraper blade on the belt. Adjust the pressure if necessary, refer to scraper model installation guide.

When maintenance tasks are completed, test run the conveyor to ensure the scraper is performing properly.

PARTS LIST - REF. DRW. No.: E905-002

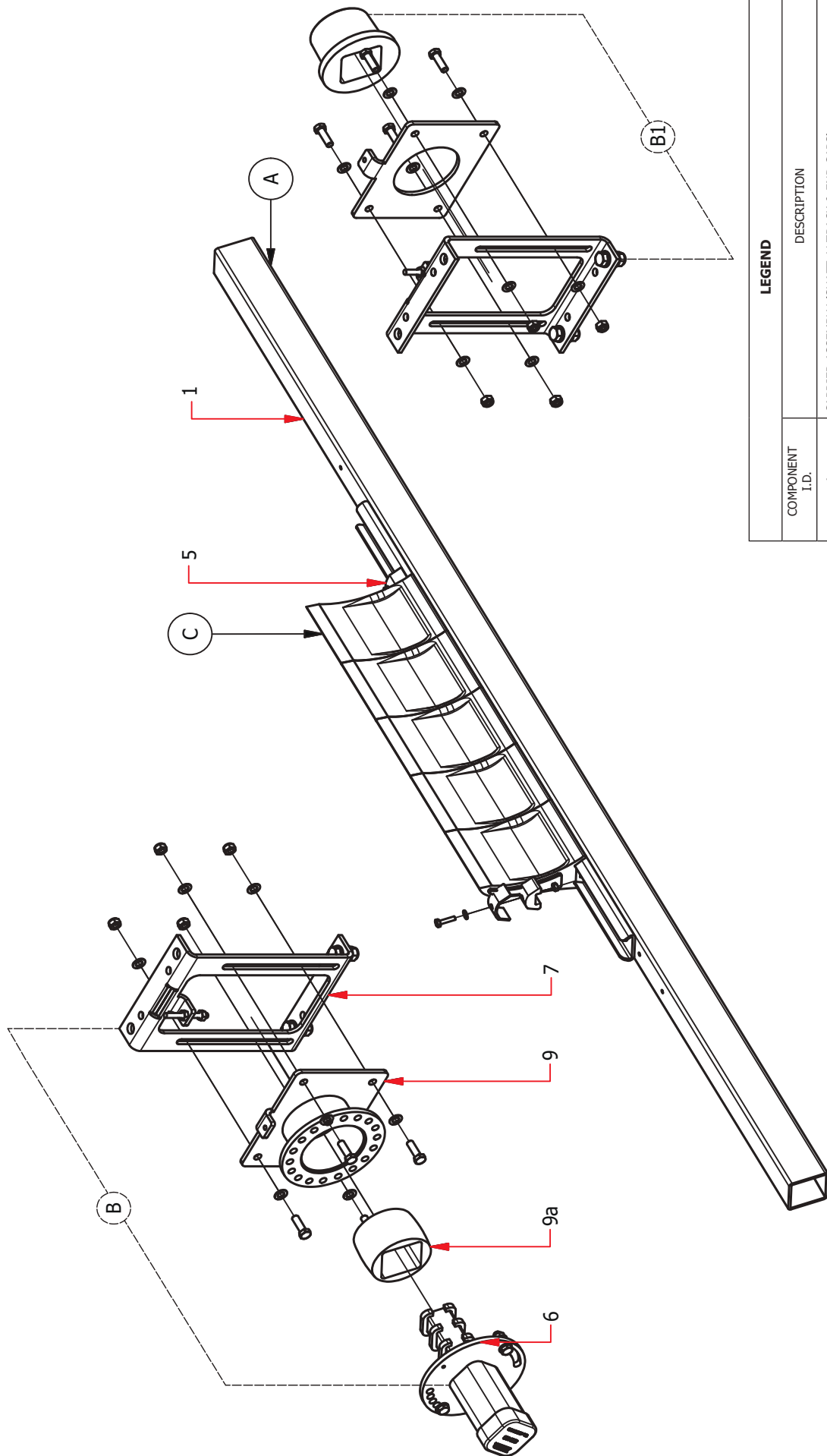
ITEM No.	DESCRIPTION	SIZE	SHAFT LENGTH (mm)	BELT WIDTH (mm)	PART No.
A.	Carrier Assembly Including shaft, "V" track and end stops.	Size 1	1200	400-500	2-8.1.1
		Size 2	1500	600-750	2-8.1.2
		Size 3	2000	900-1200	2-8.1.3
		Size 4	2500	1350-1500	2-8.1.4
		Size 4	3000	1650-1800	2-8.1.41
B.	Torsion twist Tensioner and mount assembly including bearing, bushes, mounting brackets and tensioner units (Belt Widths 1500 to 2400 require 2 Twist Tensioner Units)	Size 1 & 2	N/A	400-750	2-2.33
		Size 3	N/A	900-1200	2-2.34
		Size 4	N/A	1350-2400	2-2.36
C.	Poly Blades	120mm	N/A	N/A	2-7.8
		150mm	N/A	N/A	2-7.81
D.	Optional / 3-Piece Shaft Assembly including inner carrier shaft, outer carrier shafts.	Size 1	1200	400-500	2-8.1.1-3P
		Size 2	1500	600-750	2-8.1.2-3P
		Size 3	2000	900-1200	2-8.1.3-3P
		Size 4	2500	1350-1500	2-8.1.4-3P
		Size 4	3000	1650-1800	2-8.1.41-3P
		Size 5	4000	2100-2400	2-8.1.5-3P

NOTE! Always quote belt width.

ASSEMBLY INSTRUCTIONS

- All scrapers will be wrapped and clearly marked with the model number, scraper blade grade and belt width.
 - Note:** - Scrapers will be supplied with all nuts and bolts to complete the assembly and installation.
- Referring to the parts list check that the correct parts and quantities have been supplied for the model and belt width of scraper ordered.
- Normally scrapers are supplied with blades (3) and end stops (5) assembled and fixed to the carrier shaft. If this is not the case, assemble as shown using lithium base grease as a lubricant to ease future removal of blades. If necessary, use rubber mallet to tap the blades into the "V" track.
- Proceed with installation as per installation guide.

E905-TT TWIST TENSIONER MOUNT SINGLE ROW MULTI-BLADE HEAD PULLEY SCRAPER



LEGEND	
COMPONENT I.D.	DESCRIPTION
A	CARRIER ASSEMBLY (SHAFT, V-TRACK & END CAPS)
C	POLY BLADE (120 or 150 mm BLADES)
B (STANDARD)	2x TWIST MOUNT ASSEMBLY (BEARING, BUSHES, MOUNTING BRACKET & TWIST UNIT)
B1	1x TWIST MOUNT ASSEMBLY & 1x FAR SIDE BEARING ASSEMBLY (ON REQUEST ONLY) (BEARING, BUSHES, MOUNTING BRACKET & TWIST UNIT)

PARTS LIST: FOR TWIST TENSIONER MOUNT

PLEASE SPECIFY BELT WIDTH WHEN ORDERING

DRW. No. E905-002

REV. A

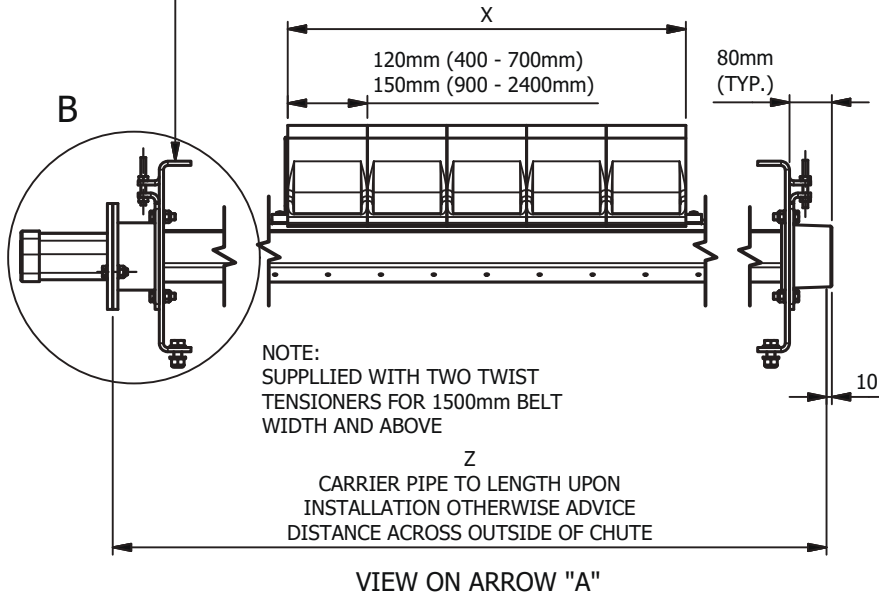
INSTALLATION GUIDE - REF. DRW. No.: E905-003

1. Refer to the Assembly Instructions, Parts List and Parts list drawing to confirm that all the necessary parts have been supplied and that the scraper is correctly assembled.
2. Remove mounting brackets (7) from nearside bearing assembly (9) and farside bearing assembly (8).
3. Referring to the installation data sheet and dimensions given in the dimension table determine the scraper work zone and select the optimum position for the scraper.
4. After establishing the optimum position for the scraper on the head pulley, mark and cut out the near and farside chute openings. The farside opening need only accommodate scraper adjustment.
 - *Note 1:* - Shield the conveyor belt and head pulley to prevent burning during cutting and welding activities.
 - *Note 2:* - The mounting brackets (7) may be omitted and the bearing plates bolted directly to the chute sides. Separate chute access doors may then be required for inspection and maintenance access. Please consult a Brelko representative for this installation option.
5. With reference to the installation data sheet select the most convenient location for the mounting brackets (7).
 - *Note:* - Mounting brackets (7) can be welded or bolted to the chute sides.
6. Tack weld the near and farside mounting brackets (7) to the chute sides or bolt to structure.
7. Remove one or both carrier shaft (1) end caps and install scraper through nearside chute opening.
8. Position carrier (1) centrally with reference to belt edges and head pulley and attach the nearside bearing assembly (9) and farside bearing assembly (8) to the mounting brackets (7).
9. Using nearside bearing assembly (9) and farside bearing assembly (8) as reference determine exact carrier (1) length, mark off; remove carrier (1) and nearside bearing assembly (9) and farside bearing assembly (8).
10. Carefully cut carrier shaft (1) to required length and de-burr shaft ends, reposition carrier shaft (1) centrally with reference to belt edges and head pulley.
11. Fit farside bearing bush (8a) over carrier shaft (1) end, and insert carrier shaft (1) end into farside bearing assembly (8). Tighten bolts and nuts, finger tight only as further adjustment of the scraper will be required.
12. Fit nearside bearing bush (9a) over carrier shaft (1) end, and locate nearside bearing assembly (9) as shown. Tighten bolts and nuts, finger tight only as further adjustment of the scraper will be required.
13. Complete welding of near and farside mounting brackets (7) or ensure all mounting brackets (7) nuts and bolts are firmly fastened.
14. Locate tension unit (6) and insert holding bolt into matching holes between the nearside bearing assembly (9). Tighten holding bolt and nut, finger tight only as further adjustment of the scraper will be required.
15. With reference to the dimension data sheet move scraper into the correct scraping position. Tighten bolts and nuts; do not over tighten nuts and bolts as further adjustment of the scraper might be required.
16. Using large tool, turn tension unit to bias scraper against head pulley and insert holding bolt. The tensioner only needs to be rotated until the first set of holding bolt holes between nearside bearing assemblies (9) align.
17. Firmly tighten all nuts and bolts.
18. Start the conveyor and check if all blades are in full contact with the belt surface. If further adjustment is required stop the conveyor and adjust the scraper until the next set of holding bolt holes between nearside bearing assemblies (9) align or until optimum cleaning is achieved.

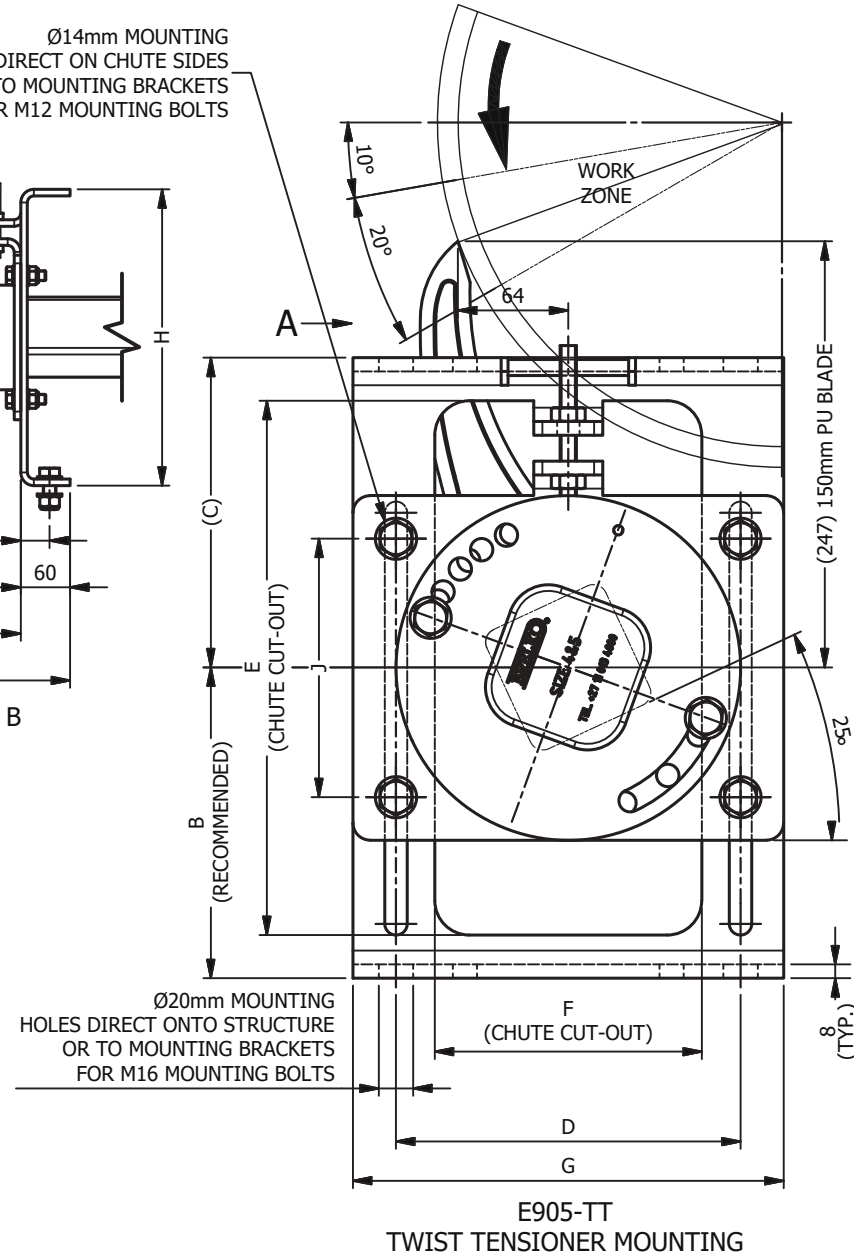
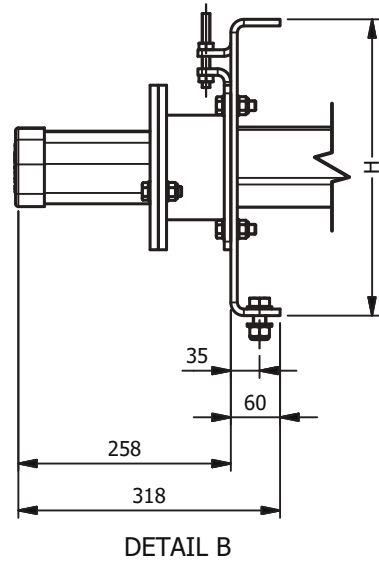
E905-TT TWIST TORSION MOUNT SINGLE ROW MULTI-BLADE HEAD PULLEY SCRAPER

© 08-2016

BRACKETS TO BE WELDED TO CHUTE SIDES OR BOLTED TO STRUCTURE
 NOTE: THESE MOUNTING BRACKETS CAN BE OMITTED, BUT ARE REQUIRED WHEN THERE ARE NO CHUTE SIDES AVAILABLE. THEY ARE ALSO USED AS AN ACCESS OPENING FOR INSTALLING AND REMOVING THE SCRAPER, AND TO PROVIDE ADJUSTMENT FOR FINAL POSITIONING.



Ø14mm MOUNTING HOLES DIRECT ON CHUTE SIDES OR TO MOUNTING BRACKETS FOR M12 MOUNTING BOLTS



DIMENSION TABLE (mm)															
BELT WIDTH	400	450	500	600	750	900	1050	1200	1350	1500	1650	1800	2100	2400	
No. BLADES	3	3	4	4	6	5	6	7	8	9	10	11	13	14	
SIZE RANGE	1		3			3			4				5		
A	53		61			61			61				61		
B	112		140			140			145				145		
C	168		210			210			215				215		
D	150		150			150			200				200		
E	215		280			280			295				295		
F	110		115			115			155				155		
G	190		190			190			250				250		
H	280		350			350			360				360		
J	100		100			100			150				150		
K	300		310			310			310				310		
L	240		250			250			250				250		
M	60		60			60			60				60		
N	35		35			35			35				35		
P	5		10			10			10				10		
Z	1200			1500			2000			2500		3000		4000(3 PIECE)	
X	360	360	480	480	720	750	900	1050	1200	1350	1500	1650	1950	2100	

INSTALLATION DETAIL: STANDARD MOUNT.

DRW. E905-003
 No.

REV. A



7. Procedure for Replacing/Repairing Scrapers

Repair/replace Belt Scraper components when, general maintenance tasks are performed scraper damage due to accelerated blade wear, scraper damage due to blocked chutes, clip joints/emergency belt repairs etc.

- 7.1. Request permit to work from an authorised person, who will isolate and lock out the belt.
- 7.2. Open access door, if provided, and clear loose items about the spindle before commencing with work.
- 7.3. Loosen the locknuts and then lower/raise the scrapers, as necessary.
- 7.4. If replacing scrapers, insert balance pipe – which must be longer than the carrier shaft – into the one end of the shaft.
- 7.5. Loosen the shaft and turn it 180 degrees, that is, scraper tips pointing downward.
- 7.6. Remove one spindle on the intended exit end.
- 7.7. Slide out the scraper assembly from the intended exit end of the pipe.
- 7.8. Service the scraper on the platform.
- 7.9. Blade replacement:

Refer to Brelko installation instructions for belt scraper model in use.

Brelko nylon torsion holders have been designed to break out of the torsion holder support v-track to protect the scraper, scraper mounting components, conveyor belt and conveyor belt equipment against damage due to emergency clip joints, loose/damaged splicing, belt protrusions, chute blockages etc. If torsion holders damaged occur follow the steps below to replace individual or all of the torsion holders:

- a. Remove and clean the damaged scraper to assess the amount of damage to the scraper, the scraper torsion holders and scraper components.
 - b. If the scraper has been working for more than 4 weeks and/or there has been significant blade wear remove and replace all the torsion holders and blades and replace with new kits, this will eliminate belt damage due to uneven scraper torsion holder and blades.
 - c. If the scraper has been working for 1~2 weeks replace only damaged torsion holders and blades, however assess the damage and ensure the remaining torsion holders will not cause any damage to the conveyor belt.
- 7.10. Scraper Adjustment:
- ### **Refer to Brelko installation instructions for belt scraper model in use.**
- a. Reposition using the balance pipe.
 - b. Obtain sanction for test, or permission to adjust for performance evaluation.
 - c. Tighten all nuts and ensure that belt cleaning or scraper performance is acceptable.
 - d. Clear up any loose items which resulted from your work.

No: 25853

CODE: -

CONTACT TEL: _____

DATE IN: _____

CUSTOMER: _____

ATTENTION: _____

CONTRACT/ORDER No.: _____

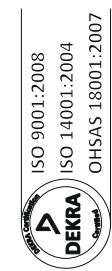
JOB CARD SERVICE WAYBILL							IMPORTANT NOTES / COMMENTS												
BELT No.	BELT SIZE	EQUIPMENT TYPE	MOUNT TYPE	EQUIPMENT CONDITION (AVERAGE / GOOD / EXCELLENT)	INSPECTION FINDINGS				WORK DONE or ACTION RECOMMENDED							ALWAYS REFER THE ABOVE COMMENTS TELEPHONICALLY TO THE RELEVANT PERSON FOR SPELLING REFER TO THE GENERAL AND CONVEYING TERMS SHEET INCLUDED IN THE INDEX SECTION OF THIS WAYBILL BOOK.			
					BELT SCRAPER / PRODUCT	CONVEYOR BELT and CHUTE			SPARES FITTED			MINE SPARES = M / Brelko Spares = B							
PRODUCT LIFE REMAINING (LOW / MEDIUM / HIGH)	CLEANING (POOR / GOOD / EXCELLENT)	NEW / EVEN	GROOVES / WORN	PROTRUSIONS (CLIPS / SPACES / LOOSE PATCH)	EXCESSIVE	AVERAGE	LITTLE	BLADES / HOLDERS	MOUNTS	CARRIER ASSEMBLY	SPINDLES	SKIRTING	OTHER SPARES	ADJUST SCRAPER SET	TIGHTEN LOOSE NUTS & BOLTS	FURTHER INVESTIGATION	CLEANED		

CUSTOMER REPRESENTATIVE : _____ (please print) TIME IN: _____

CUSTOMERS SIGNATURE : _____ TIME OUT: _____

BRELKO REPRESENTATIVE : _____

SAFETY : _____



© 2003-05

DOC NO	ISSUE NO	REVISION	SEPTEMBER	PAGE
15107	9	9	2016	1 of 2

CONVEYOR BELT & EQUIPMENT CHECK LIST / QCP

CUSTOMER DETAILS

Customer Name:	Contact Number:
Attention:	Date of Inspection
Inspected By	Brelko Representative

CONVEYOR DIMENSIONS

Belt Number:	Material Carried:	Belt Speed:	
Belt Length:	Belt Width:	Troughing Angle:	
Top Cover Condition:		Bottom Cover Condition:	
Splice:	Yes <input type="checkbox"/> No <input type="checkbox"/>	Clip Joint:	Yes <input type="checkbox"/> No <input type="checkbox"/>
Conveyor Running	Yes <input type="checkbox"/> No <input type="checkbox"/>	Inspection Tags:	Yes <input type="checkbox"/> No <input type="checkbox"/>
Edge Damage:	Yes <input type="checkbox"/> No <input type="checkbox"/>	Cover Strip:	Yes <input type="checkbox"/> No <input type="checkbox"/>
Comments:			

HEAD END / HEAD CHUTE

Chute Condition:	Head Pulley Lagging:
Snub Pulley Lagging:	Build up:
Belt Movement:	
Comments:	

IDLER CHECK

Trough Idler Condition:	Return Idler Condition:
Troughing Frame Condition:	Return Frame Condition:
Comments:	

PRIMARY SCRAPER

Position Correct:	Yes <input type="checkbox"/> No <input type="checkbox"/>	Type of Primary Scraper installed:	
<small>(Contact of Scraper Blade must be between 10 to 30 degrees, under the pulley horizontal line.)</small>			
Mounts firmly mounted:	Yes <input type="checkbox"/> No <input type="checkbox"/>	All bolts, nuts tightened:	Yes <input type="checkbox"/> No <input type="checkbox"/>
Adequate Tensioning:	Yes <input type="checkbox"/> No <input type="checkbox"/>	All Caps, Denso Tape in place:	Yes <input type="checkbox"/> No <input type="checkbox"/>
Housekeeping:			
Chute Material build up:			
Blade Wear:	Low <input type="checkbox"/> Medium <input type="checkbox"/> High <input type="checkbox"/>	Cleaning:	Poor <input type="checkbox"/> Fair <input type="checkbox"/> Good <input type="checkbox"/>
Comments:			

SECONDARY SCRAPER #1

Type / Model of Secondary Scraper Installed:			
Positioning Correct: <input type="checkbox"/>			
<small>(Scraper blade must preferably be a minimum 100mm from pulley tangent.)</small>			
All Caps, Denso Tape in Place:	Yes <input type="checkbox"/> No <input type="checkbox"/>	Mounts firmly mounted:	Yes <input type="checkbox"/> No <input type="checkbox"/>
All Bolts & Nuts Tightened:	Yes <input type="checkbox"/> No <input type="checkbox"/>	Adequate tension/adjustment:	Yes <input type="checkbox"/> No <input type="checkbox"/>
Angle Correct Set:	Yes <input type="checkbox"/> No <input type="checkbox"/>	Carrier Frame cut to size	Yes <input type="checkbox"/> No <input type="checkbox"/>
<small>Angle of scraper must be 90 degrees to the conveyor belt, dependant on conditions.</small>			
Chute / Material build up:	Yes <input type="checkbox"/> No <input type="checkbox"/>	Housekeeping:	
Blade wear:	Low <input type="checkbox"/> Medium <input type="checkbox"/> High <input type="checkbox"/>	Cleaning:	Poor <input type="checkbox"/> Fair <input type="checkbox"/> Good <input type="checkbox"/>
Comments:			

SECONDARY SCRAPER #2

Type / Model of Secondary Scraper Installed:																
Positioning Correct:																
Scraper blade must preferably be a minimum 100mm from pulley tangent.																
All Caps, Denso Tape in Place:			Yes		No		Mounts firmly mounted:			Yes		No				
All Bolts & Nuts Tightened:			Yes		No		Adequate tension/adjustment:			Yes		No				
Angle Correct Set:			Yes		No		Carrier Frame cut to size			Yes		No				
Angle of scraper must be 90 degrees to the conveyor belt, dependant on conditions.																
Chute / Material build up:			Yes		No		Housekeeping:									
Blade wear:			Low		Medium		High		Cleaning:		Poor		Fair		Good	
Comments:																

TAKE UP PULLEYS / COUNTERWEIGHT / PLOUGH

Type / Model of Plough Installed:													
Are Flat Return Idlers Installed:		(In front)		Yes		No		(Behind)		Yes		No	
Any excessive belt movement:		Yes		No		Adequate space for material to fall off of conveyor belt				Yes		No	
Is the Plough firmly mounted:		Yes		No		Is the Safety Chain firmly mounted and correctly adjusted:				Yes		No	
Is the Plough Free moving:		Yes		No		Is the entire Blade / Nose Piece in contact with the conveyor belt:				Yes		No	
Housekeeping:													
Comments:													

CONVEYOR BELT TRACKING / ALIGNMENT

Is the Belt Tracking centre:		Yes		No		Are there any Tracking Systems installed:			Troughing		Return		
Is there any visible damage to structure caused by poor belt tracking:						Yes			No				
Conveyor belt length:						Are the tracking systems correctly positioned:			Yes		No		
Are the tracking systems firmly mounted:				Yes		No		Are all bolts & nuts tightened:		Yes		No	
Are all Idlers in contact with the Belt - Adequate Tension on the system:						Yes		No		Housekeeping:			
Comments:													

LOADING / TRANSFER CHUTE

Chute Condition:		Poor		Fair		Good		Material loading in centre of conveyor belt:					
Dead Boxes:		Yes		No		Deflector Plates:		Yes		No		Drop Heights:	
Tail Pulley Condition		Good		Fair		Poor							
Comments:													

KEYSKIRTING®

Size of Keyskirt®:		1	2	3	4	Length of Keyskirt® Installed :							
Positioning of Keyskirt® :						Other Product used as Skirting		Yes		No		State	
Mounting Arrangement		Std.				Offset				Other			
All bolts & nuts securely fastened:				Yes		No		Housekeeping:					
Comments:													

FEEDBOOTS

Type of Feedboot installed:		Universal		Combination		Is the system correctly positioned:		Yes		No	
						(System to be positioned centrally to the load area.)					
Drop Height:						Is the system securely mounted:		Yes		No	
All Bolts & Nuts tightened:		Yes		No		Condition of Idlers:		Poor		Fair	
Lead in and lead out Idlers in place:		Yes		No		Condition of UHMW Liners:		Low		Medium	
Housekeeping:											
Comments:											

HI - IMPACT SYSTEM

Type of Hi - Impact system installed:											
Is the system correctly positioned:				Yes		No		Drop heights:			
System to be positioned centrally to the load area.											
Is the system securely mounted:				Yes		No		All bolts & nuts tightened:		Yes	
Are all Idlers in contact with the belt:				Yes		No		Idler condition:		Poor	
BTA Condition:				Poor		Fair		Are chains / D shackles in place & securely fastened:		Yes	
All Hardware in Good Condition:				Yes		No		Housekeeping:			
Comments:											

AIR CANNONS

Size of Air Cannon Installed:		5ltr		Quantity		10ltr		Quantity			
		25ltr		Quantity		50ltr		Quantity			
		100ltr		Quantity		200ltr		Quantity			
Is the Air Cannon securely fastened onto the structure:				Yes		No		Is an Air Lance installed:		Yes	
Size of the Air Lance:								Are the Air Cannons correctly positioned:		Yes	
Power supply:								Air supply:			
Operating system:		Single timer		PLC		Manual push button		Sequential			
All Bolts & Nuts securely tightened:				Yes		No		All components in good order:		Yes	
Distance between Air Cannon & Solenoid Valve:								Any Air Leaks in the Pipe Work:		No	
Is a Water Trap Installed:				Yes		No		Is a Lubricator installed:		Yes	
Distance from Air Cannon:								Distance from Air Cannon:			
Are the safety / warning signs in place and visible:				Yes		No		Housekeeping:			
Comments:											

TAIL PULLEY / PLOUGH

Type / Model of Plough Installed:											
Are Flat Return Idlers installed:		(In front)	Yes		No		(Behind)	Yes		No	
Any excessive belt movement:		Yes		No		Adequate space for material to fall off of conveyor belt:		Yes		No	
Is the Plough firmly mounted:		Yes		No		Is the Safety Chain firmly mounted and correctly adjusted:		Yes		No	
Is the Plough free moving:		Yes		No		Is the entire Blade / Nose Piece in contact with the conveyor belt:		Yes		No	
Housekeeping:											
Comments:											

Brelko Supervisor

Name: _____

Date: _____

Signature: _____

Customer

Name: _____

Date: _____

Signature: _____



DOC No	ISSUE No	REVISION	OCTOBER	PAGE
FS 023	04	04	2018	Page 3 of 3



SHIPPING WEIGHTS

Shipping Weights - kg (lb)

E905 (Carrier with blades)

BELT WIDTH	400	450	500	600	750	900	1050	1200	1350	1500	1650	1800	2100	2400
SIZE RANGE	Size 1			Size 2		Size 3			Size 4					
Kg	31.4	31.4	32.6	34.9	36.1	44.5	44.7	46	66.5	66.8	72.8	74.1	98.1	100.5
Lb	69.2	69.2	71.9	76.9	79.6	98.1	98.5	101.4	146.6	147.3	160.5	163.3	216.3	221.6

Carrier Shaft (No Blades)

Shipping Dimensions - W x H x L (mm (in))

E905

BELT WIDTH	400	450	500	600	750	900	1050	1200	1350	1500	1650	1800	2100	2400
SIZE RANGE	Size 1			Size 2		Size 3			Size 4					
mm	235 x 210 x 1507			235 x 210 x 1507		305 x 235 x 2007			305 x 235 x 2007					
in	9.3 x 8.3 x 59.3			9.3 x 8.3 x 59.3		12 x 9.3 x 79			12 x 9.3 x 79					

TWIST TORSION MOUNT - NEAR SIDE

Shipping Dimensions - W x H x L (mm(in))

E905

BELT WIDTH	400	450	500	600	750	900	1050	1200	1350	1500	1650	1800	2100	2400
SIZE RANGE	Size 1			Size 2			Size 3			Size 4				
mm	200 x 200 x 300			200 x 200 x 300			200 x 200 x 300			310 x 300 x 510				
in	7.9 x 7.9 x 11.8			7.9 x 7.9 x 11.8			7.9 x 7.9 x 11.8			12.2 x 11.8 x 20				

TWIST TORSION MOUNT - FAR SIDE

Shipping Dimensions - W x H x L (mm(in))

E905

BELT WIDTH	400	450	500	600	750	900	1050	1200	1350	1500	1650	1800	2100	2400
SIZE RANGE	Size 1			Size 2			Size 3			Size 4				
mm	200 x 200 x 300			200 x 200 x 300			200 x 200 x 300			310 x 300 x 510				
in	7.9 x 7.9 x 11.8			7.9 x 7.9 x 11.8			7.9 x 7.9 x 11.8			12.2 x 11.8 x 20				

11. Trouble Shooting

Problem	Possible Cause	Possible Solution
Poor cleaning performance	Scraper under-tensioned	Adjust to correct pressure - refer installation instructions
	Scraper over-tensioned	Adjust to correct pressure - refer installation instruction
	Scraper installed in wrong location	Verify dimension - refer installation drawing
	Scraper blade worn or damaged	Replace scraper blade
Rapid Blade Wear	Tension on scraper too high/low	Adjust to correct tension - refer installation instruction
	Scraper not located correctly	Check scraper location for correct dimensions
	Blade attack angle incorrect	Check scraper location for correct dimensions
	Material too abrasive for blade	Option: switch to alternate scraper tip grade (contact Brelko for available options)
	Mechanical splice damaging blade	Repair, skive or replace splice
Centre wear on blade (smile effect)	Blade smaller than material path	Add additional blade to match material path
	Tension on scraper too high/low	Adjust to correct pressure - refer installation instruction
Unusual wear or damage to blade	Mechanical splice damaging blade	Repair, skive or replace splice
	Belt damaged or ripped	Repair or replace belt
	Scraper not correctly located	Verify dimension - refer installation drawing
	Damage to pulley or pulley lagging	Repair or replace pulley
Vibration or noise	Scraper not located correctly	Verify dimension - refer installation drawing
	Blade attack angle incorrect	Verify dimension - refer installation drawing
	Scraper running on empty belt	Use a spray pole when the belt is empty
	Scraper tension too high/low	Adjust to correct tension or slight adjust to diminish
	Scraper locking bolts not secure	Check and tighten all bolts and nuts
	Scraper not square to head pulley	Verify dimension - refer installation drawing
	Material build-up in chute	Clean up build-up on scraper and in chute
Scraper being pushed away from pulley	Scraper tension not set correctly	Ensure correct tension/increase tension slightly
	Sticky material is overburdening scraper	Increase tension; add primary (head pulley) scraper
	Scraper not set up correctly	Confirm location dimensions are equal on both sides